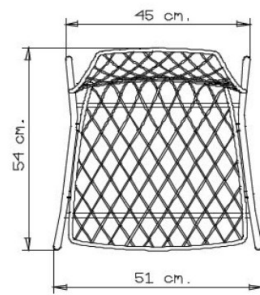
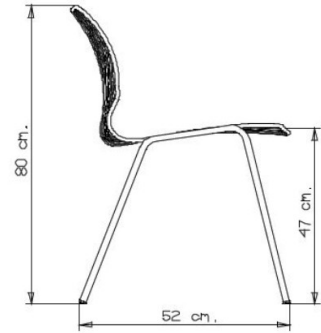
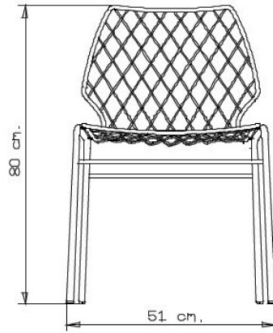


Uni.one

UNI.ONE COLLECTION:
Uni.one,



Chair with 4 legs steel frame. Seat and back in steel frame.

STACKABLE

10

WEIGHT

4,5 kg

PACK

0,38 m³

PIECES PER BOX

4

NOTE

Resources

[dwg](#)



FRAMES

AC STEEL



NCS s0502-b VR Traffic
white
☀️



NCS S0500-N VR Pure
white
☀️



VR Pewter
☀️



NCS S4000-N VR
White aluminium
☀️



RAL 7016 Anthracite
grey
☀️



NCS S9000-N VR Jet
black
☀️



NCS S9000-N VR Matt
Jet Black
☀️



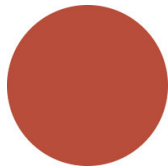
NCS S8005-Y20R
Brown
☀️



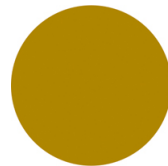
VR Rough metallic
bronze
☀️



NCS S4040-R
Marsala
☀️



NCS S3060-Y80R
Coral red
☀️



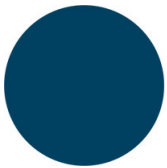
NCS S3060-Y Curry
☀️



NCS S7020-G50Y
Olive green
☀️



NCS S4050-B40G
Water blue
☀️



NCS S6030-B
Capri blue
☀️

USES

coffee & restaurants, hotels, travel, retail, outdoor, Residenziale,