

Uni 378

UNI COLLECTION:

Uni 550, Uni 378, Uni 550M, Uni 378B, Uni 378M, Uni 378B-M, Uni 380, Uni 380M, Uni 562, Uni 562M, Uni386, Uni 386M, Uni 602, Uni 602M, Uni 551, Uni 551M, Uni 552, Uni552M, Uni552-G, Uni 552M-G, Uni 552T, Uni 552G-T, Uni 558-DP, Uni 558M-DP, Uni 558-DR, Uni 553, Uni 558M-DR, Uni 553M, Uni 565, Uni 220, Uni 221, Uni 223, Uni 222, Uni 578-4P, Uni 578M-4P, Trolley 536,



Barstool with steel frame, 4 legs. Polypropylene shell.

STACKABLE

4

WEIGHT

6,8 kg

PACK

0,46 m³

PIECES PER BOX

4

FINISHES SEATING

PP POLYPROPYLENE



NCS S0502-B
Traffic white



NCS S 2005-G90Y
Hemp white



NCS S4005-Y50R
Turtle-dove



NCS S6502-R Clay



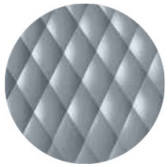
NCS S 3020-Y70R
Powder pink



NCS S 5030-Y70R
Terracotta



NCS S3060-Y80R
Coral red



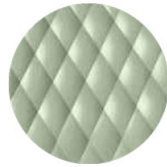
NCS S4005-B20G
Squirrel grey



NCS S7502-B
Anthracite grey



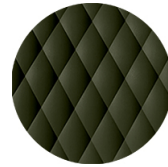
RAL 9005 Jet black



NCS S3010-G50Y
Pistachio



NCS S3060-Y Curry



NCS S7020-G50Y
Olive green



NCS S4020-B10G Dusty blue



NOTE

Resources

3ds



| dwg



Shell in **olive green** is made of **100% recycled polypropylene** from industrial waste.

FRAMES

AC STEEL



NCS s0502-b VR Traffic
white
☀



NCS S0500-N VR Pure
white
☀



VR Pewter
☀



NCS S4000-N VR
White aluminium
☀



RAL 7016 Anthracite
grey
☀



NCS S9000-N VR Jet
black
☀



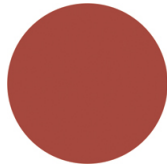
NCS S9000-N VR
Matt Jet Black
☀



NCS S8005-Y20R
Brown
☀



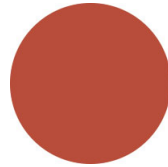
VR Rough metallic
bronze
☀



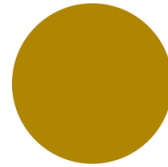
NCS S4040-R
Marsala
☀



CR Chrome



NCS S3060-Y80R
Coral red
☀



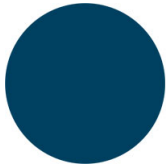
NCS S3060-Y Curry
☀



NCS S7020-G50Y
Olive green
☀



NCS S4050-B40G
Water blue
☀



NCS S6030-B
Capri blue
☀

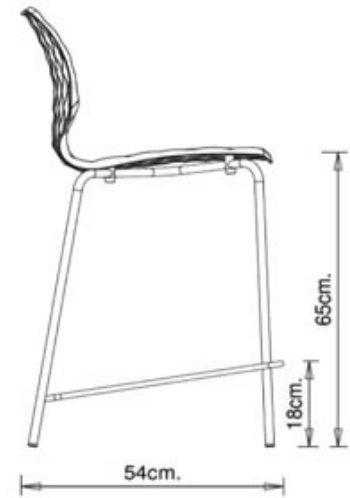
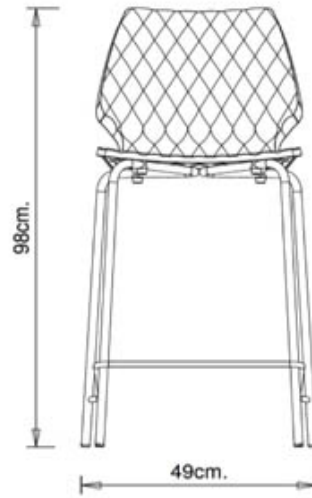
USES

coffee & restaurants, office and waiting areas,

Uni 378B

UNI COLLECTION:

Uni 550, Uni 378, Uni 550M, Uni 378B, Uni 378M, Uni 378B-M, Uni 380, Uni 380M, Uni 562, Uni 562M, Uni386, Uni 386M, Uni 602, Uni 602M, Uni 551, Uni 551M, Uni 552, Uni552M, Uni552-G, Uni 552M-G, Uni 552T, Uni 552G-T, Uni 558-DP, Uni 558M-DP, Uni 558-DR, Uni 553, Uni 558M-DR, Uni 553M, Uni 565, Uni 220, Uni 221, Uni 223, Uni 222, Uni 578-4P, Uni 578M-4P, Trolley 536,



Barstool with steel frame, 4 legs. Polypropylene shell. Version with seat-height H 65 cm.

STACKABLE

4

WEIGHT

6,5 Kg

PACK

0,46 m³

PIECES PER BOX

4

FINISHES SEATING

PP POLYPROPYLENE



NCS S0502-B
Traffic white
≡



NCS S 2005-G90Y
Hemp white
≡



NCS S4005-Y50R
Turtle-dove
≡



NCS S6502-R Clay
≡



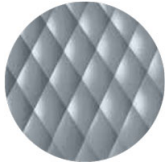
NCS S 3020-Y70R
Powder pink
≡



NCS S 5030-Y70R
Terracotta
≡



NCS S3060-Y80R
Coral red
≡



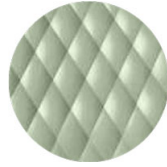
NCS S4005-B20G
Squirrel grey
≡



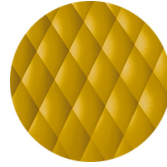
NCS S7502-B
Anthracite grey
≡



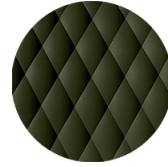
RAL 9005 Jet black
≡



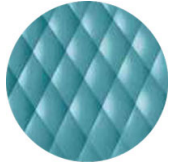
NCS S3010-G50Y
Pistachio
≡



NCS S3060-Y Curry
≡



NCS S7020-G50Y
Olive green
☀



NCS S4020-B10G Dusty blue
≡

NOTE

Resources

3ds  | dwg 

Shell in **olive green** is made of **100% recycled polypropylene** from industrial waste.

FRAMES

AC STEEL



NCS s0502-b VR Traffic
white
☀



NCS S0500-N VR Pure
white
☀



VR Pewter
☀



NCS S4000-N VR
White aluminium
☀



RAL 7016 Anthracite
grey
☀



NCS S9000-N VR Jet
black
☀



NCS S9000-N VR
Matt Jet Black
☀



NCS S8005-Y20R
Brown
☀



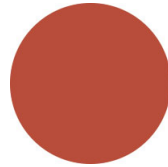
VR Rough metallic
bronze
☀



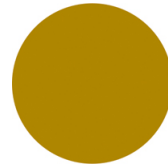
NCS S4040-R
Marsala
☀



CR Chrome



NCS S3060-Y80R
Coral red
☀



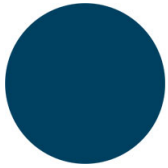
NCS S3060-Y Curry
☀



NCS S7020-G50Y
Olive green
☀



NCS S4050-B40G
Water blue
☀



NCS S6030-B
Capri blue
☀

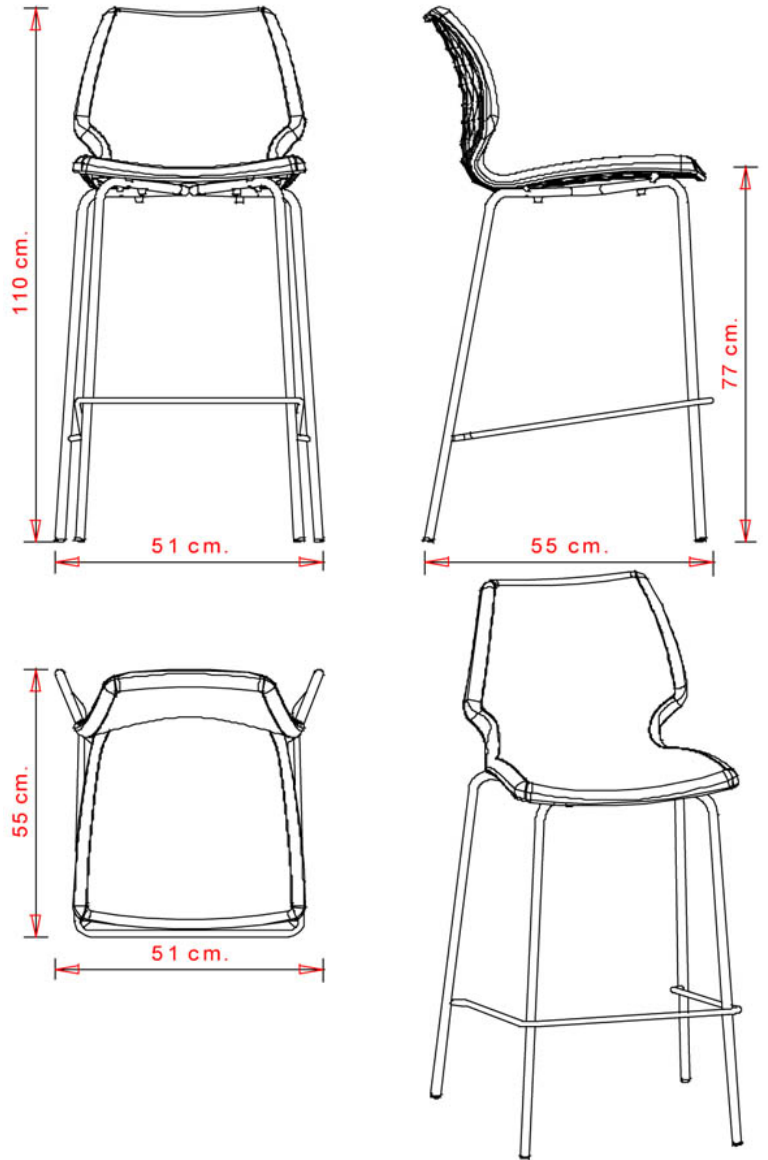
USES

coffee & restaurants, office and waiting areas,

Uni 378M

UNI COLLECTION:

Uni 550, Uni 378, Uni 550M, Uni 378B, Uni 378M, Uni 378B-M, Uni 380, Uni 380M, Uni 562, Uni 562M, Uni386, Uni 386M, Uni 602, Uni 602M, Uni 551, Uni 551M, Uni 552, Uni552M, Uni552-G, Uni 552M-G, Uni 552T, Uni 552G-T, Uni 558-DP, Uni 558M-DP, Uni 558-DR, Uni 553, Uni 558M-DR, Uni 553M, Uni 565, Uni 220, Uni 221, Uni 223, Uni 222, Uni 578-4P, Uni 578M-4P, Trolley 536,



Barstool with steel frame, 4 legs. Upholstered polypropylene shell.

WEIGHT

8,95Kg

PACK

0,36 m³

PIECES PER BOX

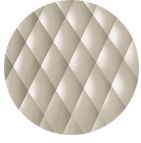
1

FINISHES SEATING

PP POLYPROPYLENE



NCS S0502-B
Traffic white
≡



NCS S 2005-G90Y
Hemp white
≡



NCS S4005-Y50R
Turtle-dove
≡



NCS S6502-R Clay
≡



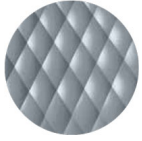
NCS S 3020-Y70R
Powder pink
≡



NCS S 5030-Y70R
Terracotta
≡



NCS S3060-Y80R
Coral red
≡



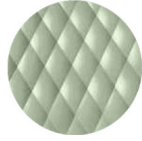
NCS S4005-B20G
Squirrel grey
≡



NCS S7502-B
Anthracite grey
≡



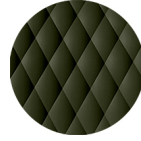
RAL 9005
Jet black
≡



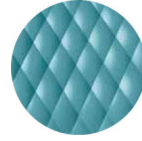
NCS S3010-G50Y
Pistachio
≡



NCS S3060-Y
Curry
≡

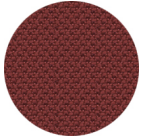


NCS S7020-G50Y
Olive green
☀



NCS S4020-B10G
Dusty blue
≡

TE FABRICS



Alba
+ 8 colors



Aragon
+ 14 colors



Melva
+ 5 colors



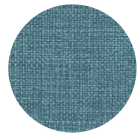
Fortis + 8 colori



Roccia
+ 8 colors



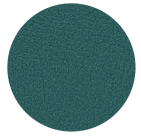
Amsterdam
+ 8 colors



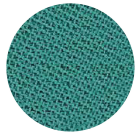
Medley Gabriel
+ 15 colors



Mirage
+ 8 colors



Inca
+ 14 colors



Chili Gabriel
+ 8 colors



Convert
+ 7 colors



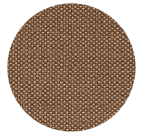
Fenice
+ 8 colors



Mood Gabriel
+ 8 colors



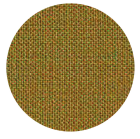
Valencia
+ 14 colors



Reviva Hero
+ 10 colors
☀



Fabthirty Rubelli
+ 8 colors
☀



Remix 3 Kvadrat
+ 15 colors



Ocean Mastrotto
+ 15 colors

NOTE

Resources

[3ds](#)



| [dwg](#)



Shell in **olive green** is made of **100% recycled polypropylene** from industrial waste.

FRAMES

AC STEEL



NCS s0502-b VR Traffic white



NCS S0500-N VR Pure white



VR Pewter



NCS S4000-N VR White aluminium



RAL 7016 Anthracite grey



NCS S9000-N VR Jet black



NCS S9000-N VR Matt Jet Black



NCS S8005-Y20R Brown



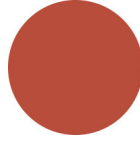
VR Rough metallic bronze



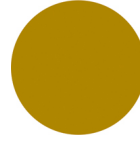
NCS S4040-R Marsala



CR Chrome



NCS S3060-Y80R Coral red



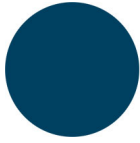
NCS S3060-Y Curry



NCS S7020-G50Y Olive green



NCS S4050-B40G Water blue



NCS S6030-B Capri blue



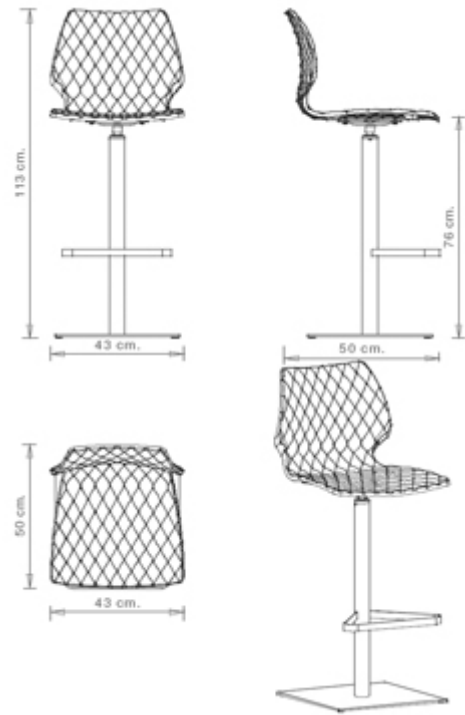
USES

coffee & restaurants, office and waiting areas,

Uni 380

UNI COLLECTION:

Uni 550, Uni 378, Uni 550M, Uni 378B, Uni 378M, Uni 378B-M, Uni 380, Uni 380M, Uni 562, Uni 562M, Uni386, Uni 386M, Uni 602, Uni 602M, Uni 551, Uni 551M, Uni 552, Uni552M, Uni552-G, Uni 552M-G, Uni 552T, Uni 552G-T, Uni 558-DP, Uni 558M-DP, Uni 558-DR, Uni 553, Uni 558M-DR, Uni 553M, Uni 565, Uni 220, Uni 221, Uni 223, Uni 222, Uni 578-4P, Uni 578M-4P, Trolley 536,



Swivel barstool with central steel base and kick-back device. Polypropylene shell.

WEIGHT

17 kg

PACK

0,29 m³

PIECES PER BOX

1

FINISHES SEATING

PP POLYPROPYLENE



NCS S0502-B
Traffic white



NCS S 2005-G90Y
Hemp white



NCS S4005-Y50R
Turtle-dove



NCS S6502-R Clay



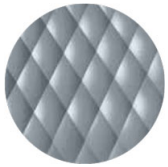
NCS S 3020-Y70R
Powder pink



NCS S 5030-Y70R
Terracotta



NCS S3060-Y80R
Coral red



NCS S4005-B20G
Squirrel grey



NCS S7502-B
Anthracite grey



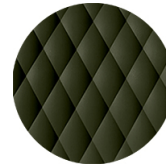
RAL 9005 Jet black



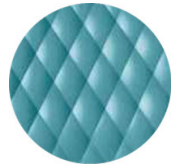
NCS S3010-G50Y
Pistachio



NCS S3060-Y Curry



NCS S7020-G50Y
Olive green



NCS S4020-B10G Dusty blue



NOTE

Resources

3ds



| dwg



Shell in **olive green** is made of **100% recycled polypropylene** from industrial waste.

FRAMES

AC STEEL



NCS s0502-b VR Traffic
white
☀️



NCS S0500-N VR Pure
white
☀️



VR Pewter
☀️



NCS S4000-N VR
White aluminium
☀️



RAL 7016 Anthracite
grey
☀️



NCS S9000-N VR Jet
black
☀️



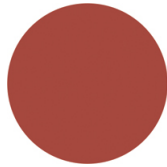
NCS S9000-N VR
Matt Jet Black
☀️



NCS S8005-Y20R
Brown
☀️



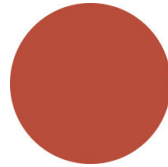
VR Rough metallic
bronze
☀️



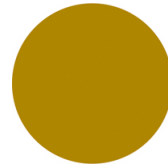
NCS S4040-R
Marsala
☀️



CR Chrome



NCS S3060-Y80R
Coral red
☀️



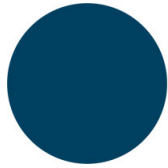
NCS S3060-Y Curry
☀️



NCS S7020-G50Y
Olive green
☀️



NCS S4050-B40G
Water blue
☀️



NCS S6030-B
Capri blue
☀️

USES

coffee & restaurants, office and waiting areas,

Uni 380M



UNI COLLECTION:

Uni 550, Uni 378, Uni 550M, Uni 378B, Uni 378M, Uni 378B-M, Uni 380, Uni 380M, Uni 562, Uni 562M, Uni386, Uni 386M, Uni 602, Uni 602M, Uni 551, Uni 551M, Uni 552, Uni552M, Uni552-G, Uni 552M-G, Uni 552T, Uni 552G-T, Uni 558-DP, Uni 558M-DP, Uni 558-DR, Uni 553, Uni 558M-DR, Uni 553M, Uni 565, Uni 220, Uni 221, Uni 223, Uni 222, Uni 578-4P, Uni 578M-4P, Trolley 536,



Swivel barstool with central steel base and kick-back device. Upholstered polypropylene shell.

WEIGHT

19,2Kg

PACK0,29 m³**PIECES PER BOX**

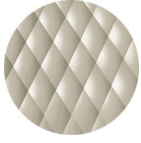
1

FINISHES SEATING

PP POLYPROPYLENE



NCS S0502-B
Traffic white
≡



NCS S 2005-G90Y
Hemp white
≡



NCS S4005-Y50R
Turtle-dove
≡



NCS S6502-R Clay
≡



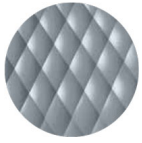
NCS S 3020-Y70R
Powder pink
≡



NCS S 5030-Y70R
Terracotta
≡



NCS S3060-Y80R
Coral red
≡



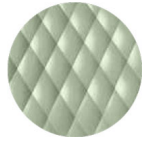
NCS S4005-B20G
Squirrel grey
≡



NCS S7502-B
Anthracite grey
≡



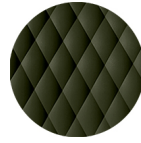
RAL 9005
Jet black
≡



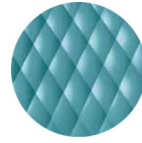
NCS S3010-G50Y
Pistachio
≡



NCS S3060-Y
Curry
≡

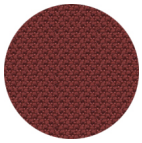


NCS S7020-G50Y
Olive green
☀



NCS S4020-B10G
Dusty blue
≡

TE FABRICS



Alba
+ 8 colors



Aragon
+ 14 colors



Melva
+ 5 colors



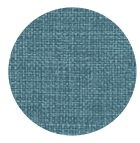
Fortis + 8 colori



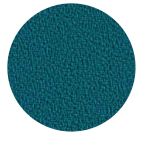
Roccia
+ 8 colors



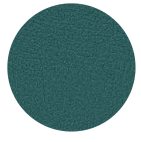
Amsterdam
+ 8 colors



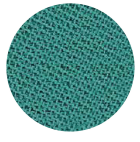
Medley Gabriel
+ 15 colors



Mirage
+ 8 colors



Inca
+ 14 colors



Chili Gabriel
+ 8 colors



Convert
+ 7 colors



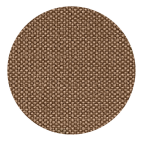
Fenice
+ 8 colors



Mood Gabriel
+ 8 colors



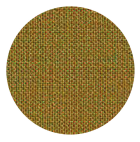
Valencia
+ 14 colors



Reviva Hero
+ 10 colors
☀



Fabthirty Rubelli
+ 8 colors
☀



Remix 3 Kvadrat
+ 15 colors



Ocean Mastrotto
+ 15 colors

NOTE

Resources

[3ds](#)  | [dwg](#) 

Shell in **olive green** is made of **100% recycled polypropylene** from industrial waste.

FRAMES

AC STEEL



NCS s0502-b VR Traffic white



NCS S0500-N VR Pure white



VR Pewter



NCS S4000-N VR White aluminium



RAL 7016 Anthracite grey



NCS S9000-N VR Jet black



NCS S9000-N VR Matt Jet Black



NCS S8005-Y20R Brown



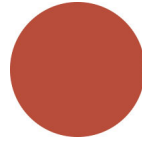
VR Rough metallic bronze



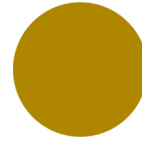
NCS S4040-R Marsala



CR Chrome



NCS S3060-Y80R Coral red



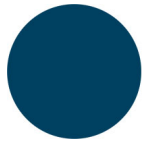
NCS S3060-Y Curry



NCS S7020-G50Y Olive green



NCS S4050-B40G Water blue



NCS S6030-B Capri blue



USES

coffee & restaurants, office and waiting areas,

Uni386

UNI COLLECTION:

Uni 550, Uni 378, Uni 550M, Uni 378B, Uni 378M, Uni 378B-M, Uni 380, Uni 380M, Uni 562, Uni 562M, Uni386, Uni 386M, Uni 602, Uni 602M, Uni 551, Uni 551M, Uni 552, Uni552M, Uni552-G, Uni 552M-G, Uni 552T, Uni 552G-T, Uni 558-DP, Uni 558M-DP, Uni 558-DR, Uni 553, Uni 558M-DR, Uni 553M, Uni 565, Uni 220, Uni 221, Uni 223, Uni 222, Uni 578-4P, Uni 578M-4P, Trolley 536,



Barstool with beech wood frame, 4 legs. Polypropylene seat and back.

WEIGHT

6,3 kg

PACK

0,35 m³

PIECES PER BOX

1

FINISHES SEATING

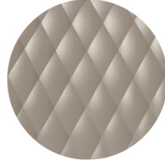
PP POLYPROPYLENE



NCS S0502-B
Traffic white
≡



NCS S 2005-G90Y
Hemp white
≡



NCS S4005-Y50R
Turtle-dove
≡



NCS S6502-R Clay
≡



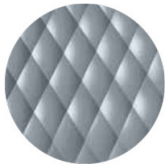
NCS S 3020-Y70R
Powder pink
≡



NCS S 5030-Y70R
Terracotta
≡



NCS S3060-Y80R
Coral red
≡



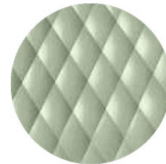
NCS S4005-B20G
Squirrel grey
≡



NCS S7502-B
Anthracite grey
≡



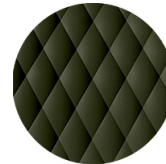
RAL 9005 Jet black
≡



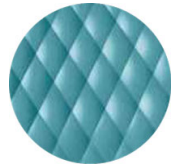
NCS S3010-G50Y
Pistachio
≡



NCS S3060-Y Curry
≡



NCS S7020-G50Y
Olive green
☀



NCS S4020-B10G Dusty blue
≡

NOTE

Resources

3ds  | dwg 

Shell in **olive green** is made of **100% recycled polypropylene** from industrial waste.

FRAMES

LE WOOD



Beech | Honey stained



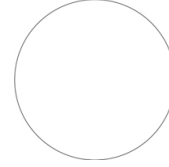
Beech | Chesnut stained



Beech | Grey stained



Beech | Dark brown stained



Beech | Stained according to sample



beech | Black stained

USES

coffee & restaurants, office and waiting areas,

Uni 386M



UNI COLLECTION:

Uni 550, Uni 378, Uni 550M, Uni 378B, Uni 378M, Uni 378B-M, Uni 380, Uni 380M, Uni 562, Uni 562M, Uni386, Uni 386M, Uni 602, Uni 602M, Uni 551, Uni 551M, Uni 552, Uni552M, Uni552-G, Uni 552M-G, Uni 552T, Uni 552G-T, Uni 558-DP, Uni 558M-DP, Uni 558-DR, Uni 553, Uni 558M-DR, Uni 553M, Uni 565, Uni 220, Uni 221, Uni 223, Uni 222, Uni 578-4P, Uni 578M-4P, Trolley 536,



Barstool with beech wood frame, 4 legs. Upholstered polypropylene seat and back.

WEIGHT

8,45Kg

PACK0,35 m³**PIECES PER BOX**

1

FINISHES SEATING

PP POLYPROPYLENE



NCS S0502-B
Traffic white
≡



NCS S 2005-G90Y
Hemp white
≡



NCS S4005-Y50R
Turtle-dove
≡



NCS S6502-R Clay
≡



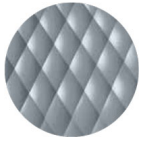
NCS S 3020-Y70R
Powder pink
≡



NCS S 5030-Y70R
Terracotta
≡



NCS S3060-Y80R
Coral red
≡



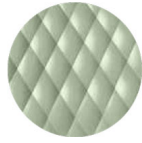
NCS S4005-B20G
Squirrel grey
≡



NCS S7502-B
Anthracite grey
≡



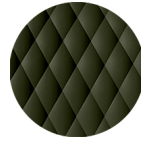
RAL 9005
Jet black
≡



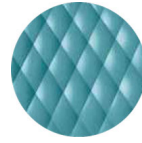
NCS S3010-G50Y
Pistachio
≡



NCS S3060-Y
Curry
≡

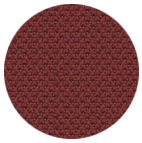


NCS S7020-G50Y
Olive green
☀



NCS S4020-B10G
Dusty blue
≡

TE FABRICS



Alba
+ 8 colors



Aragon
+ 14 colors



Melva
+ 5 colors



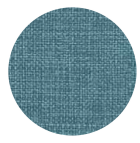
Fortis + 8 colori



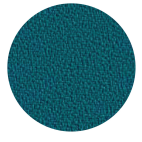
Roccia
+ 8 colors



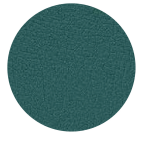
Amsterdam
+ 8 colors



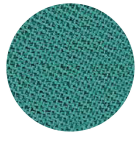
Medley Gabriel
+ 15 colors



Mirage
+ 8 colors



Inca
+ 14 colors



Chili Gabriel
+ 8 colors



Convert
+ 7 colors



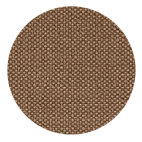
Fenice
+ 8 colors



Mood Gabriel
+ 8 colors



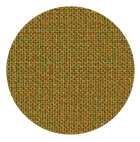
Valencia
+ 14 colors



Reviva Hero
+ 10 colors
☀



Fabthirty Rubelli
+ 8 colors
☀



Remix 3 Kvadrat
+ 15 colors



Ocean Mastrotto
+ 15 colors

NOTE

Resources

[3ds](#)



| [dwg](#)



Shell in **olive green** is made of **100% recycled polypropylene** from industrial waste.

FRAMES

LE **WOOD**



Beech | Honey stained



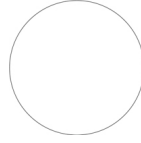
Beech | Chesnut stained



Beech | Grey stained



Beech | Dark brown stained



Beech | Stained according to sample



beech | Black stained

USES

coffee & restaurants, office and waiting areas,